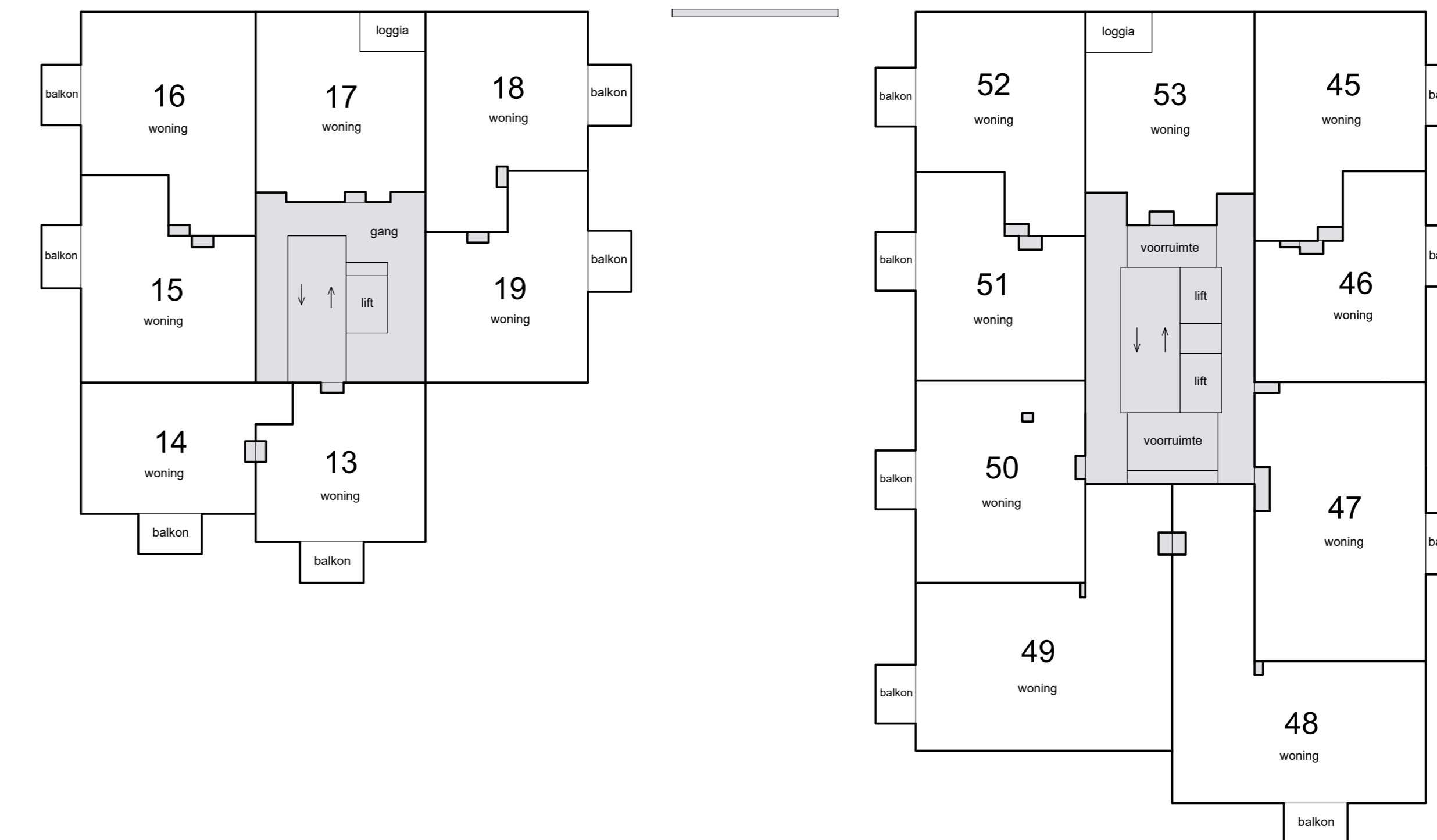


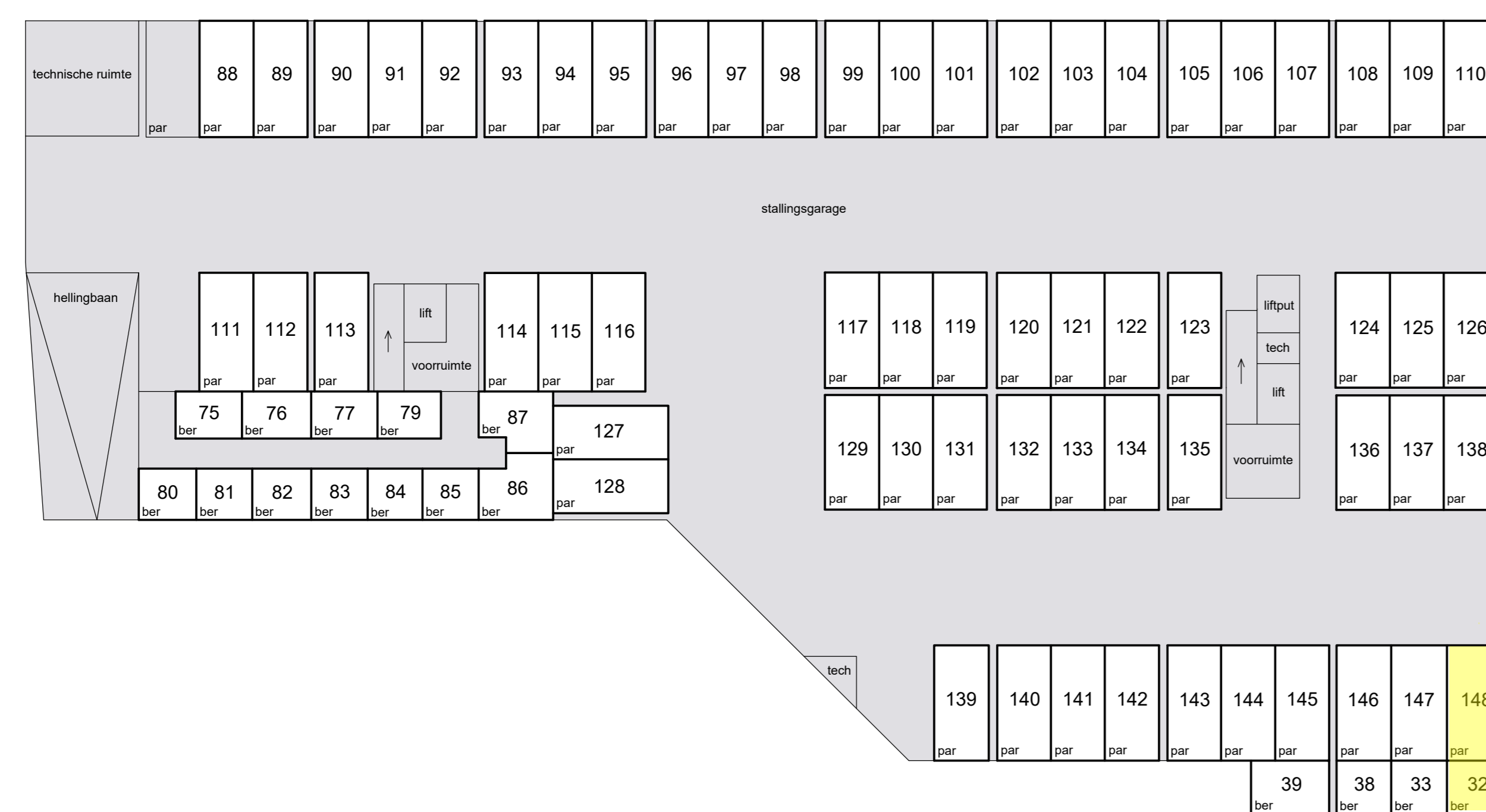
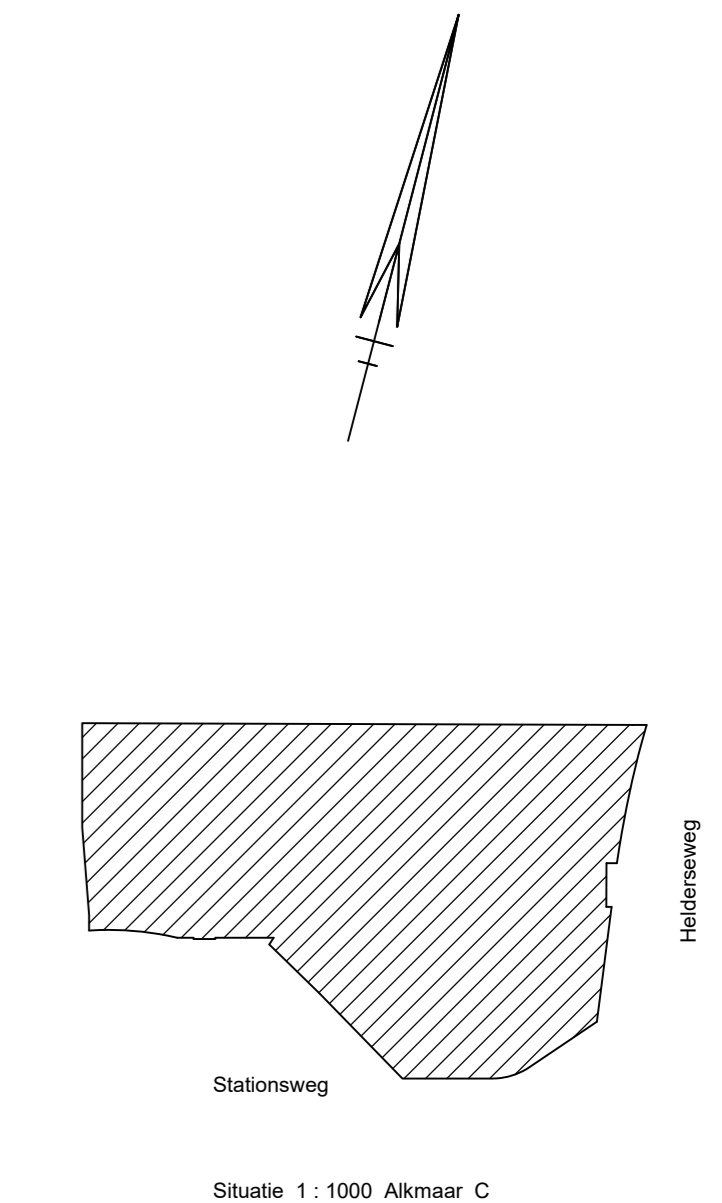
Schaal 1 : 200  
 = Gemeenschappelijk  
 Tekening bestaat uit 2 bladen  
 Blad 1



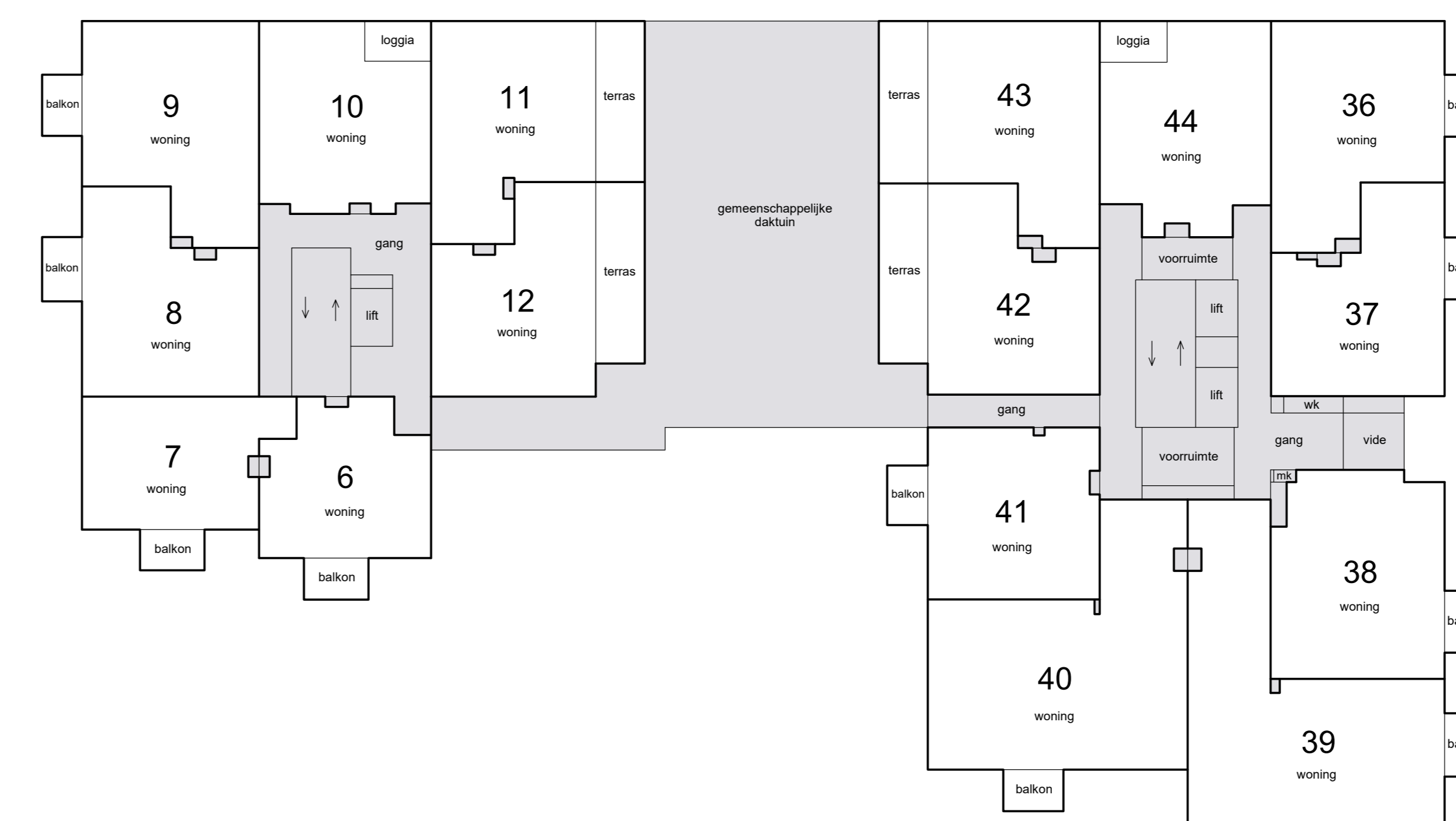
begane grond



2e verdieping

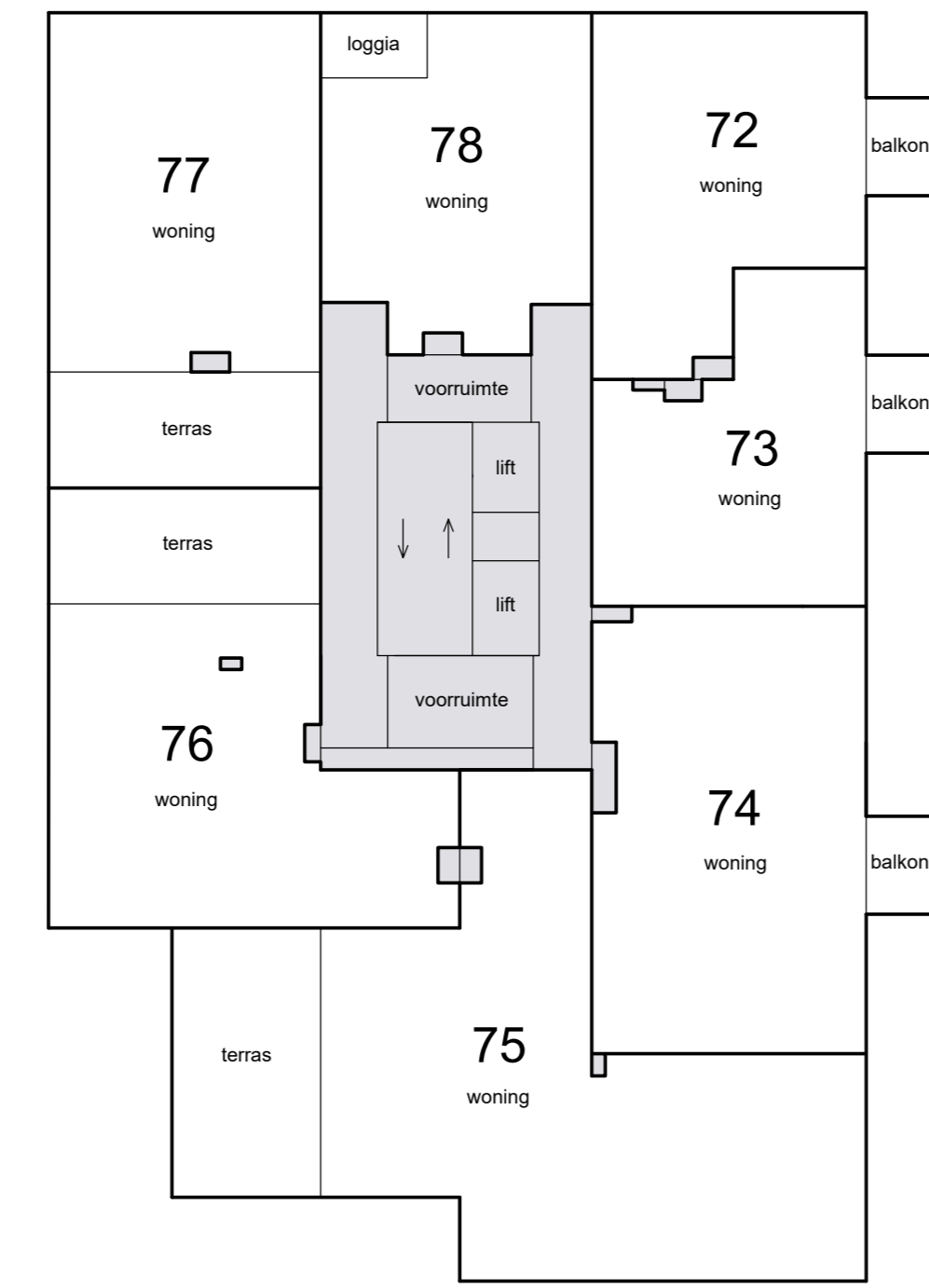
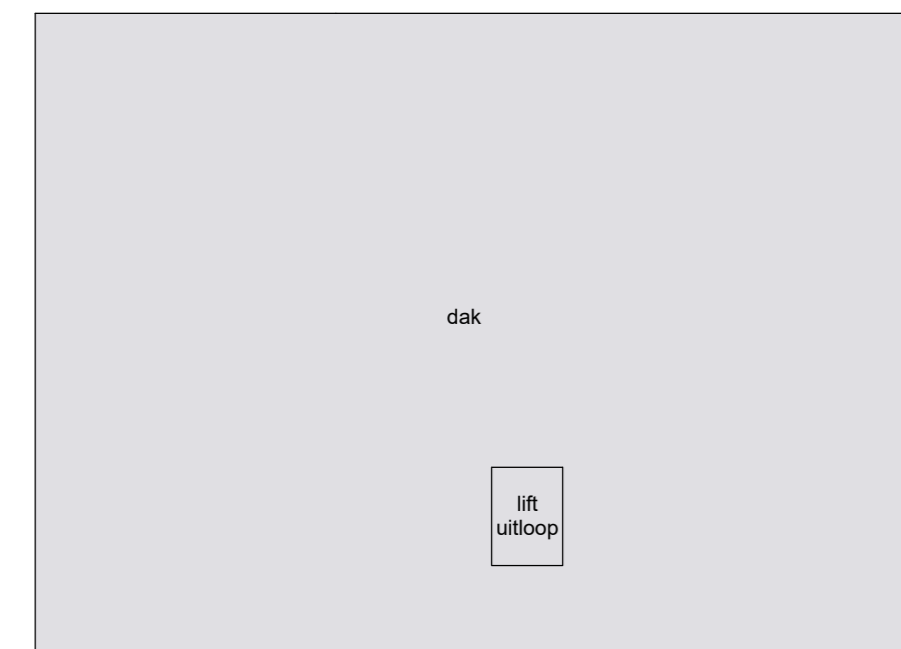


kelder

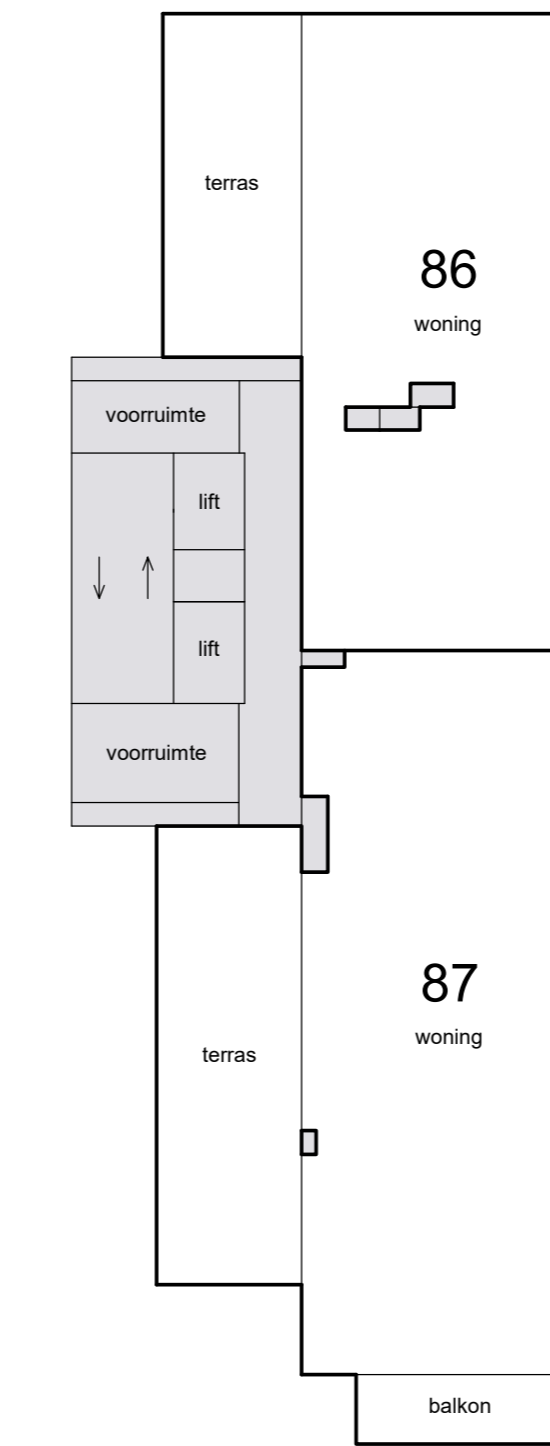


1e verdieping

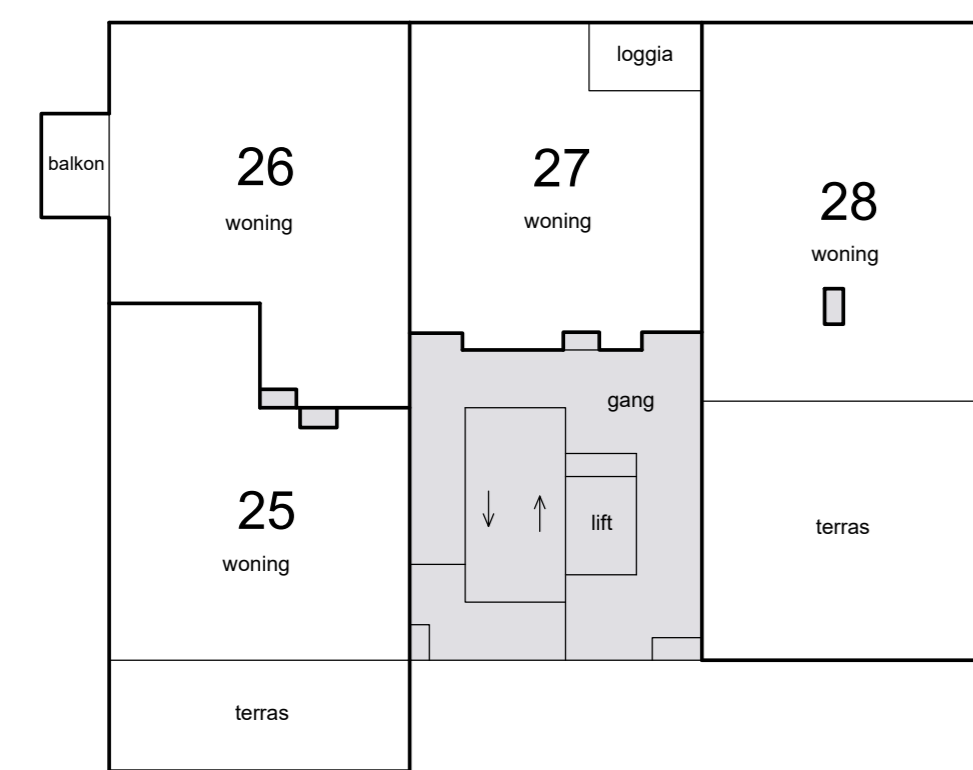




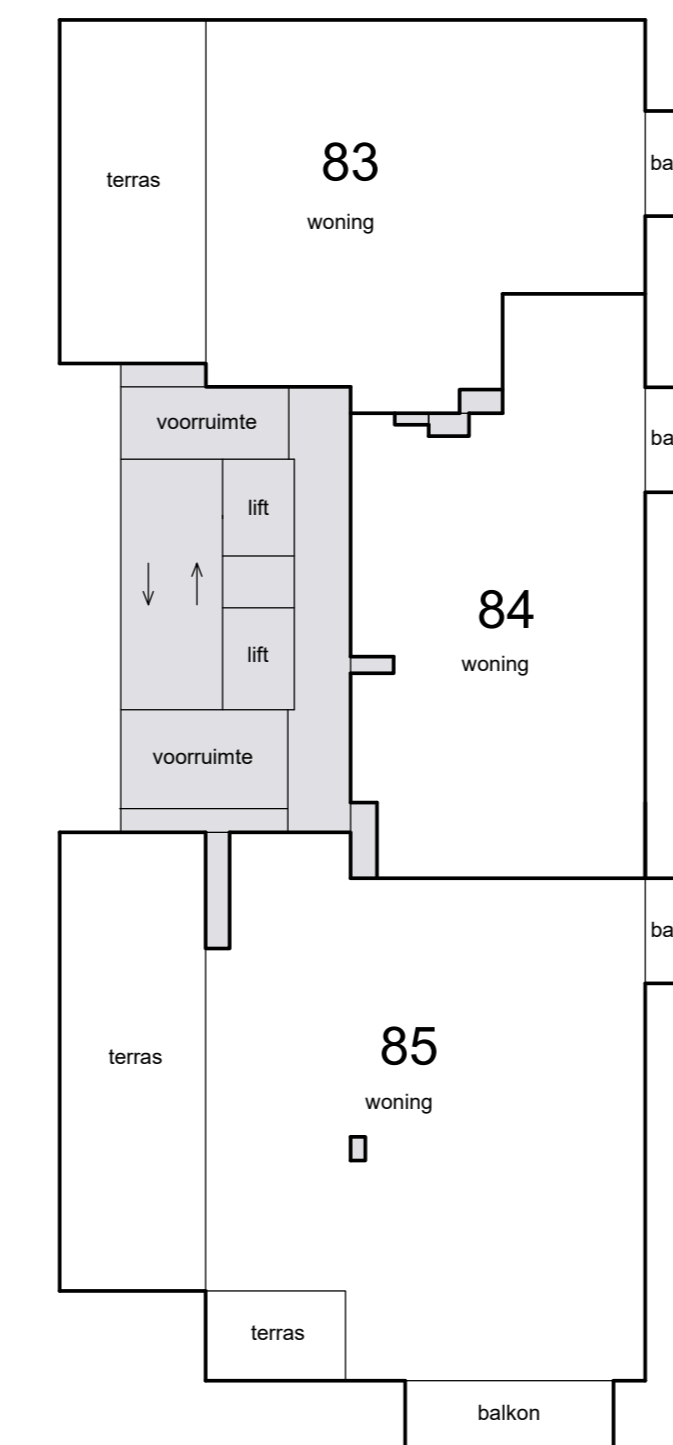
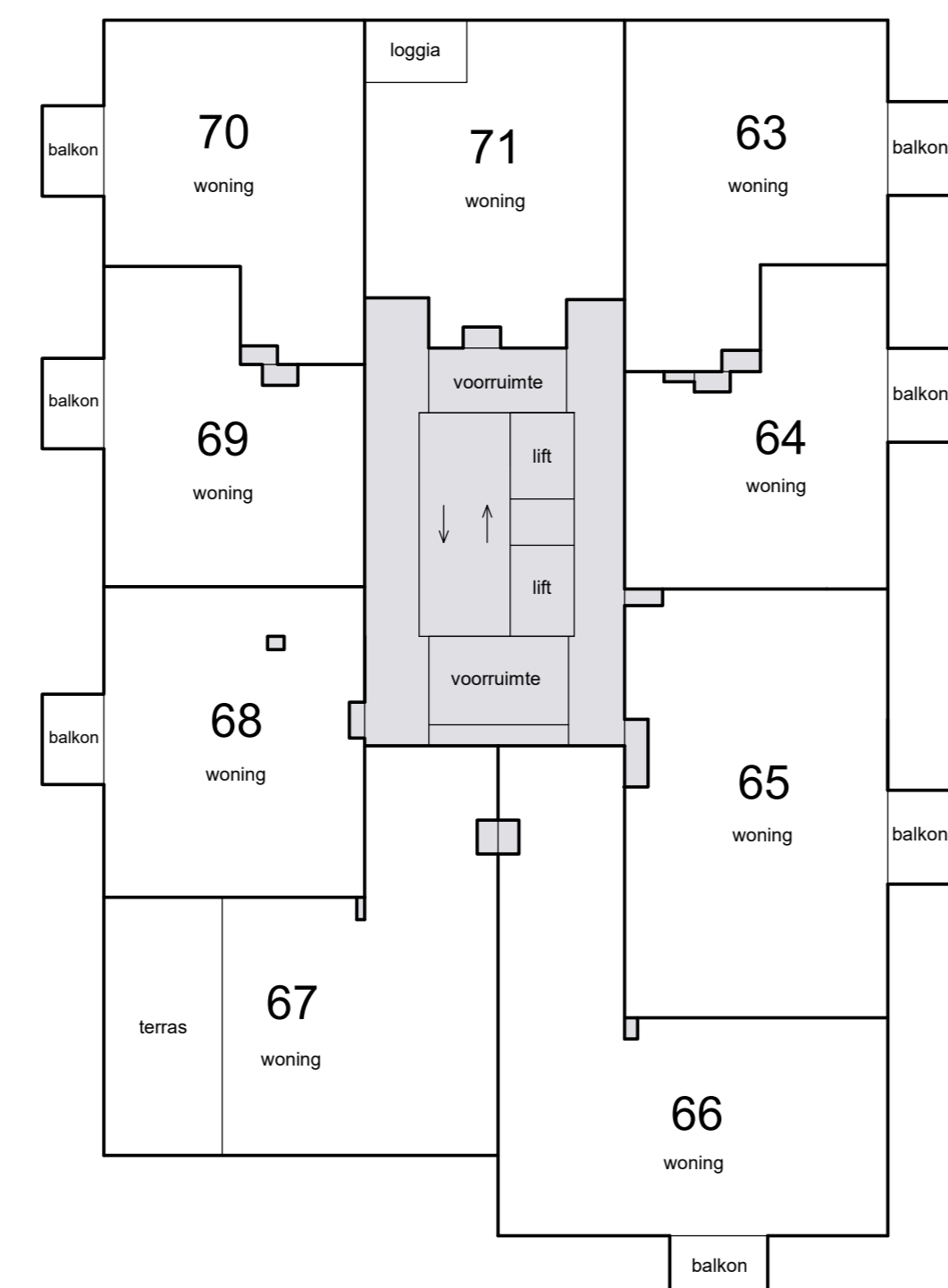
5e verdieping



8e verdieping



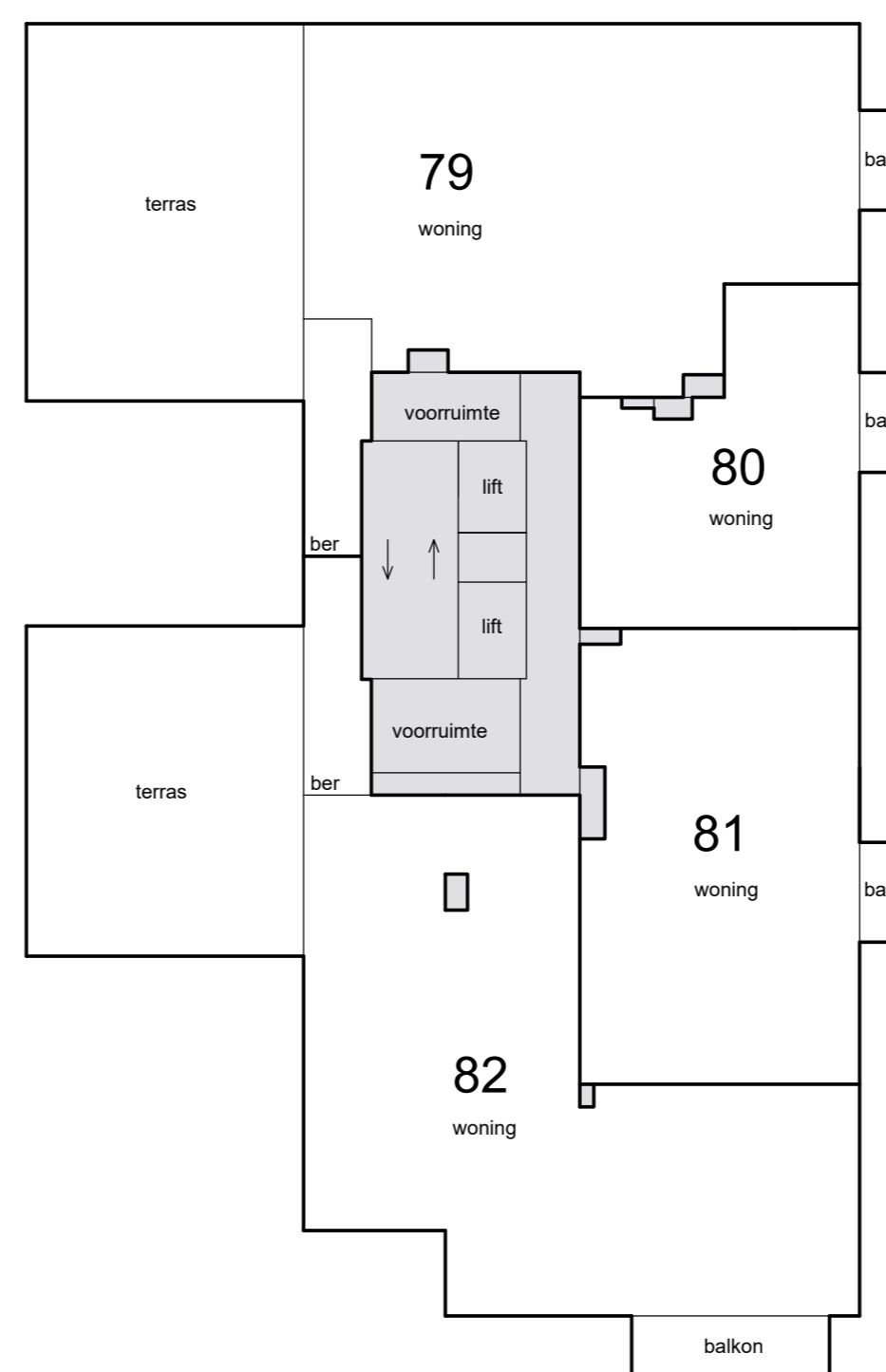
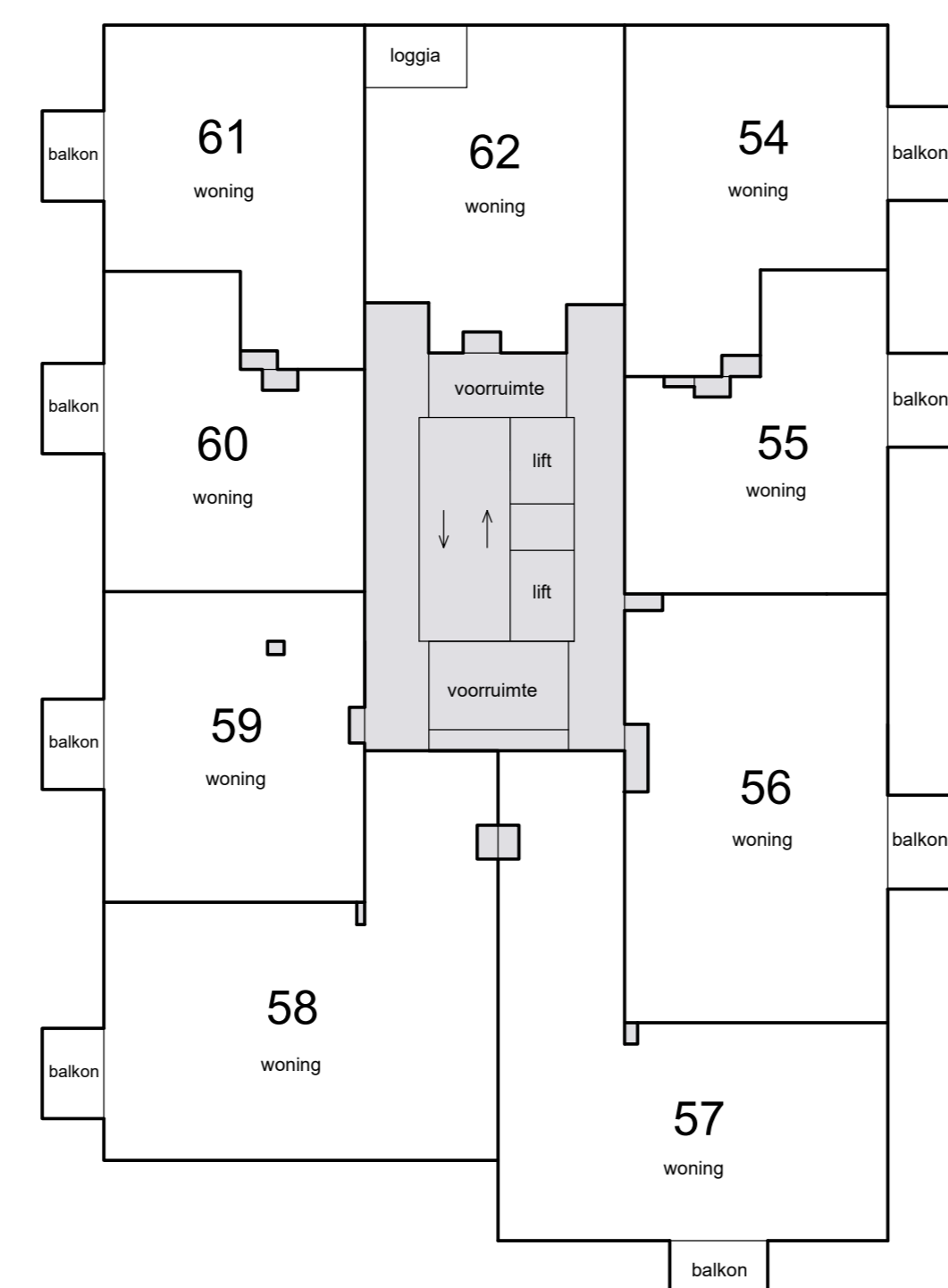
4e verdieping



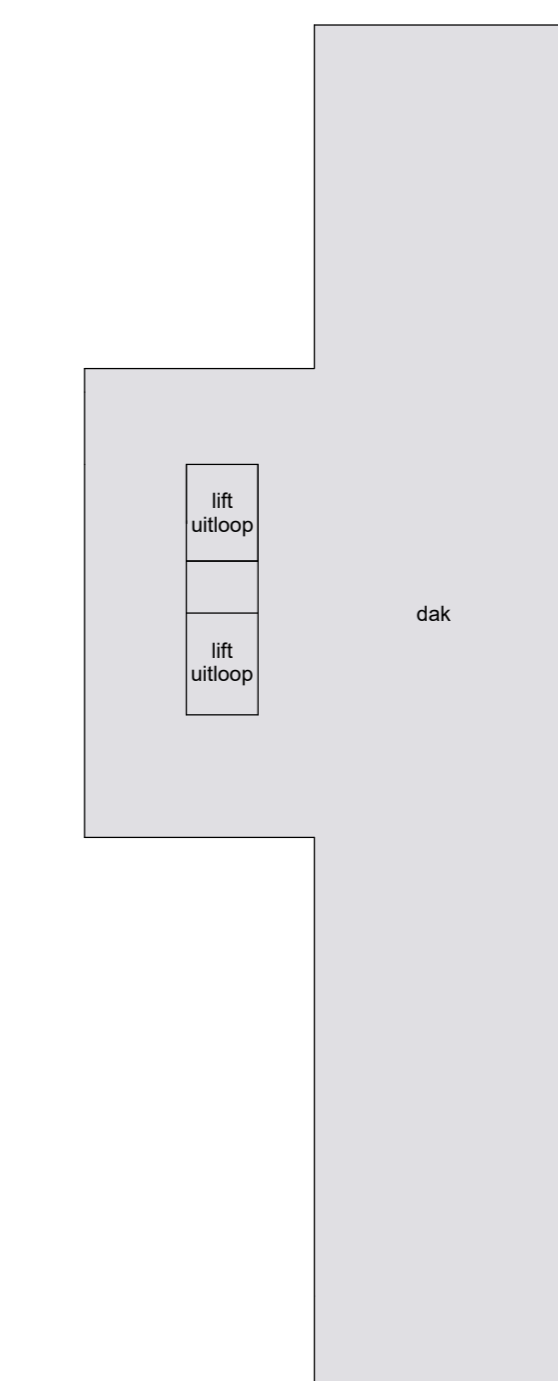
7e verdieping



3e verdieping



6e verdieping



dak

Schaal 1 : 200  
 = Gemeenschappelijk  
 Tekening bestaat uit 2 bladen  
 Blad 2

